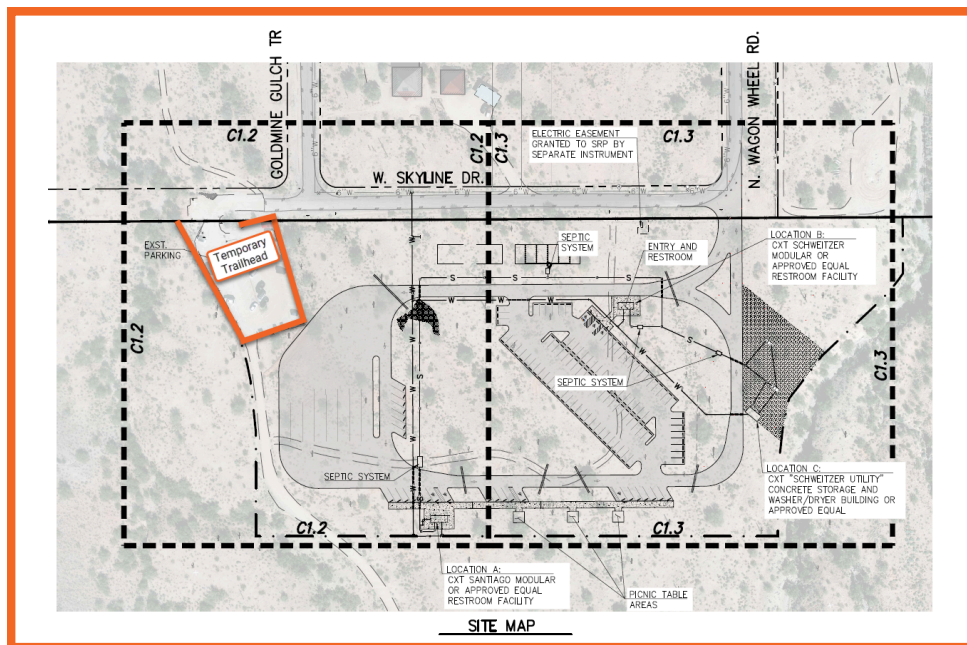


MARICOPA COUNTY

SAN TAN MOUNTAIN REGIONAL PARK GOLDMINE TRAILHEAD IMPROVEMENTS



WHAT: Goldmine Trailhead Improvements

WHEN: Beginning Monday, **March 4, 2024**. Due to a delay because of an electrical issue with the easement, a project completion date has not yet been identified.

WHY: Planned improvements to the area include:

- a contact station,
- restrooms,
- equestrian and vehicle parking,
- host sites.

PARKING: Available in temporary dirt lot west of trailhead.

The temporary trailhead offers **LIMITED PARKING**. Access to trails will remain open. **Do not trespass through the construction zone.** Please adhere to "No Parking" signs, and be mindful of the park neighbors. Parking is prohibited along the roadway.