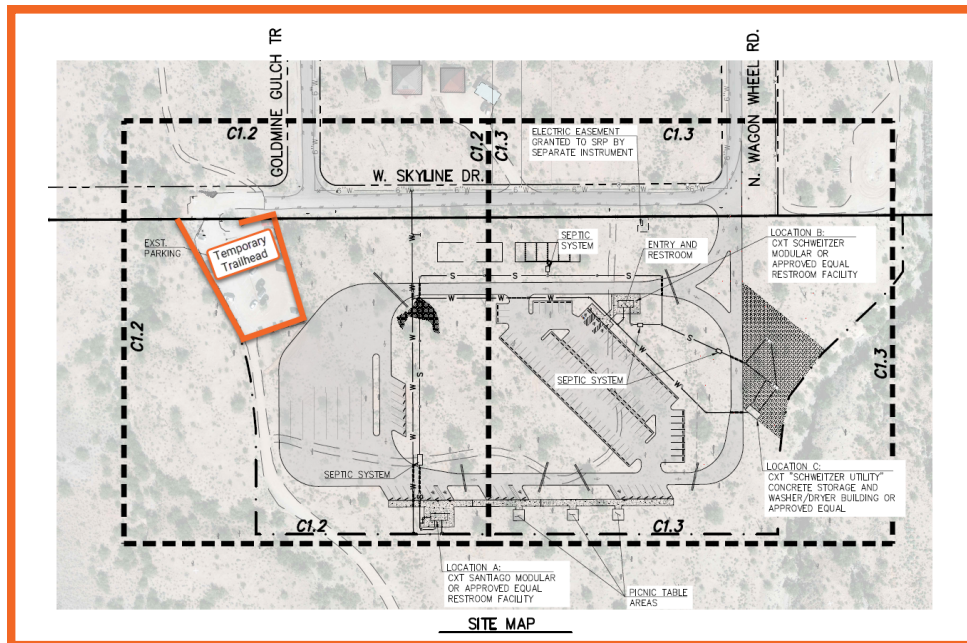


MARICOPA COUNTY

SAN TAN MOUNTAIN REGIONAL PARK GOLDMINE TRAILHEAD IMPROVEMENTS



- WHAT:** Goldmine Trailhead Improvements
- WHEN:** Beginning Monday, **March 4, 2024** through **March 2025**
- WHY:** Planned improvements to the area include:
- a contact station,
 - restrooms,
 - equestrian and vehicle parking,
 - host sites.
- PARKING:** Available in temporary dirt lot west of trailhead.

The temporary trailhead offers **LIMITED PARKING**. Access to trails will remain open. Do not trespass through the construction zone. Please adhere to "No Parking" signs, and be mindful of the park neighbors. Parking is prohibited along the roadway.